



Market Indicators

TOP GAINER	%	TOP LOSER	%
RANBAXY	3.63	DRREDDY	(2.38)
SUNPHARMA	2.10	HCLTECH	(1.75)
BANKBARODA	2.06	BAJAJ-AUTO	(1.74)
POWERGRID	1.92	BHEL	(0.89)
ONGC	1.84	JPASSOCIAT	(0.88)

Broder Indices

Index	Closing Value	Change in (Pts)	Change (%)
MID CAP	6462.31	17.62	0.27
SMALL CAP	6116.67	2.42	0.04
IPO	1530.58	(0.85)	(0.06)

Sectoral Indices

AUTO	11015.20	(21.95)	(0.20)
BANKEX	14395.07	14.39	0.10
CD	7512.84	(88.44)	(1.16)
CG	9748.10	15.91	0.16
FMCG	6659.84	(6.15)	(0.09)
HC	8880.47	59.53	0.67
IT	5965.14	13.53	0.23
METAL	8610.34	(0.37)	0.00
OIL & GAS	8716.85	28.38	0.33
POWER	1754.88	6.93	0.40
PSU	6798.13	32.62	0.48
REALTY	1880.44	(7.16)	(0.38)
TECK	3604.51	23.00	0.64

Currency Movement

USDINR	54.63	0.29↓
EURINR	71.02	0.30↓
GBPINR	83.67	0.77↓
JPYINR	53.85	0.18↓

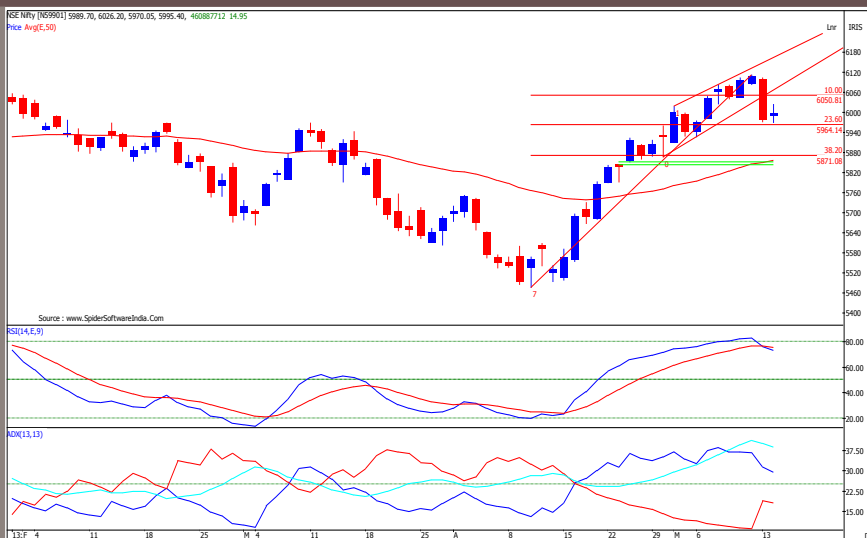
Market Breadth

Exchange	Advances	Declines	Unchanged
BSE	1140	1194	132
NSE	651	717	88

MARKET STATISTICS

ACTION	FII (₹) Cr.	DII (₹) Cr.
CASH BUY	2276.29	552.49
CASH SELL	1855.30	965.15
(Provisional)	+420.99	(412.66)

FII Derivatives	Buy (Cr.)	(Sell Cr.)	Net (Cr.)
Index Futures	1916.31	1592.14	324.17
Index Options	16260.25	15987.11	273.14
Stock Futures	1392.13	1570.25	(178.12)
Stock Options	1192.08	1187.87	4.21
Total			+423.40



NIFTY OUTLOOK

Yesterday Nifty commenced the trading with gap up of 9.25 points and registered day's low of 5970.05 and traded volatile, as mentioned in yesterday report on oversold nature of momentum indicator in intraday chart, Nifty given pullback and mark day's high of 6026.20 levels and finally concluded the day with marginal gain of 14.95 points.

- ◆ After the strong bear candle formation Monday in yesterday' price action Nifty has formed "in neck line" pattern with lower high lower low, which is in nature a continuation bearish pattern and seen after maturing the uptrend. The reaction of last two day's candlestick pattern alarming and much anticipate.
- ◆ However Failure to sustain above 6100 on a closing basis and follow through selling below 6051 which is 10% Fibonacci retracement level (5477 to 6114) would open up further downsides towards 5850 in the short term. It confluence with the 38.20% retracement (5477 - 6114) as well as the rising gap of April 25, 2013 (5836 - 5853) and 50 Days EMA 5850 make this an important support for prices. While sustaining above 6051 on daily close basis would allowed for the upside momentum to remain intact.
- ◆ On intraday chart (60 minutes) Nifty has breached the advancing Wedge pattern, which indicates further possibility of decline till 5920 and 5870. On the way up the mid body of Monday's larger bear candle around 6040 levels could act as a strong resistance from here onwards.
- ◆ Among oscillators, the smoother RSI on daily chart has confirmed negative crossover from the overbought territory which is supportive to downward price action in the indices. The trend strength indicator ADX (13) turning down from the crucial higher levels 41 is suggesting the end of prior uptrend which was in force for the last month and reversal towards down. As per the previous behavior of ADX (13) Nifty is expected to show continuation of weakness for near term.

For today trend deciding level for Nifty placed at 5997, if Nifty trade above this level then it may go up to 6027 - 6054 - 6088 level. However if Nifty trade below 5997 then it may find immediate support at 5970 level any violation of such support would signal further decline up to 5944 - 5930 level.

Indian Index Movement

MOVEMENT	SENSEX	NIFTY	SMA	SENSEX	NIFTY
OPEN	19715.80	5989.70	5 Days	19998	6046
HIGH	19831.79	6026.20	20 Days	19482	5913
LOW	19652.69	5970.05	60 Days	19195	5808
CLOSE	19722.29	5995.40	100 Days	19404	5877
CHANGE IN PTS	+30.62	+14.95	200 Days	18863	5719
CHANGE IN %	0.16	0.25	260 Days	18381	5573

*Source: BSE, NSE, BI, Capital Market & rbi.org.in



Symbol	PIVOT TABLE			Simple Moving Average				
	S2	S1	Pivot Point	R1	R2	5 Days	20 Days	55 Days
Sensex	19557	19639	19736	19819	19915	19998	19482	19163
Nifty	5941	5968	5997	6024	60563	6046	5914	5799
Bank Nifty Future	12353	12442	12559	12648	12766	12613	12435	11907
Nifty future	5949	5978	6009	6037	6068	6055	5920	5809
NIFTY COMPONENTS								
ACC	1182	1193	1207	1218	1232	1221	1218	1214
AMBUJACEM	182	184	185	188	189	188	186	184
ASIANPAINT	4664	4707	4746	4788	4827	4695	4709	4700
AXISBANK	1435	1451	1462	1478	1488	1463	1453	1374
BAJAJ-AUTO	1749	1768	1796	1815	1843	1831	1825	1845
BANKBARODA	676	690	698	712	721	700	696	696
BHARTIARTL	309	313	316	320	323	321	311	304
BHEL	186	187	189	191	193	194	191	191
BPCL	404	407	411	414	418	413	410	392
CAIRN	292	294	298	300	304	301	300	295
CIPLA	389	394	397	402	405	399	402	391
COALINDIA	290	292	297	299	304	301	308	310
DLF	223	227	232	236	241	234	239	251
DRREDDY	1953	1991	2055	2093	2157	2041	1979	1876
GAIL	327	332	337	342	346	339	338	330
GRASIM	2983	3000	3023	3040	3062	3021	2939	2916
HCLTECH	720	733	749	761	777	764	740	744
HDFC	849	860	866	877	884	873	849	814
HDFCBANK	680	684	690	694	699	696	685	652
HEROMOTOCO	1644	1659	1676	1691	1708	1689	1612	1611
HINDALCO	101	103	105	108	110	105	99	97
HINDUNILVR	580	582	583	585	587	584	536	487
ICICIBANK	1127	1137	1152	1162	1177	1156	1142	1088
IDFC	147	149	151	153	155	153	154	151
INDUSINDBK	482	486	491	496	501	497	468	433
INFY	2319	2335	2353	2368	2386	2357	2302	2668
ITC	329	333	336	339	343	345	328	309
JINDALSTEL	297	301	305	309	312	310	321	338
JPASSOCIAT	71	72	73	74	75	75	76	72
KOTAKBANK	716	723	728	735	739	729	704	669
LT	1490	1506	1518	1533	1545	1545	1520	1451
LUPIN	739	745	756	762	773	748	704	646
M&M	938	944	953	960	969	959	921	892
MARUTI	1679	1692	1704	1716	1728	1706	1628	1471
NMDC	122	125	127	129	131	126	127	133
NTPC	152	153	154	155	156	155	153	148
ONGC	319	323	326	330	333	325	326	317
PNB	748	757	765	774	782	770	763	766
POWERGRID	111	113	114	116	117	113	111	108
RANBAXY	408	432	445	469	482	445	451	435
RELIANCE	788	793	801	806	814	808	799	806
RELINFRA	369	379	388	398	407	399	384	389
SBIN	2240	2267	2293	2319	2345	2292	2268	2182
SESAGOA	157	159	160	162	164	162	157	156
SUNPHARMA	927	945	957	975	987	949	948	872
TATAMOTORS	291	296	300	304	308	303	292	286
TATAPOWER	91	93	94	95	96	94	94	96
TATASTEEL	292	298	302	308	313	313	309	325
TCS	1431	1444	1457	1471	1484	1479	1445	1501
ULTRACEMCO	1949	1961	1971	1983	1992	1978	1923	1887

URJA INVESTMENT PTE. LTD.

Private & Confidential



Economic Calendar

Impact	IST	Location	Indicator	Forecast	Previous	Actual
Medium	5:20	Japan	Tertiary Industry Activity (M o M)	-0.60%	1.10%	
Low	14th-19th	China	Foreign Direct Investment (Y o Y)		1.40%	
Low	10:30	Japan	Consumer Confidence	45.8	44.8	
Medium	11:00	Euro Zone	French Prelim GDP (Q o Q)	-0.10%	-0.30%	
Medium	11:30	Euro Zone	German Prelim GDP (Q o Q)	0.30%	-0.60%	
Low	12:15	Euro Zone	French CPI (M o M)	0.10%	0.80%	
Medium	13:30	Euro Zone	Italian Prelim GDP (Q o Q)	-0.40%	-0.90%	
High	14:00	Britain	Claimant Count Change	-3.1K	-7.0K	
Medium	14:00	Britain	Unemployment Rate	7.90%	7.90%	
Low	14:00	Britain	Average Earnings Index 3m/y	0.70%	0.80%	
Medium	14:30	Euro Zone	Flash GDP (Q o Q)	-0.10%	-0.60%	
High	15:00	Britain	BOE Gov King Speaks			
High	15:00	Britain	BOE Inflation Report			
High	18:00	USA	PPI (M o M)	-0.60%	-0.60%	
Medium	18:00	USA	Core PPI (M o M)	0.20%	0.20%	
Medium	18:00	USA	Empire State Manufacturing Index	4.2	3.1	
Medium	18:30	USA	TIC Long-Term Purchases	43.4B	-17.8B	
Medium	18:45	USA	Capacity Utilization Rate	78.40%	78.50%	
Medium	18:45	USA	Industrial Production (M o M)	-0.10%	0.40%	
Low	19:30	USA	NAHB Housing Market Index	43	42	
Medium	20:00	USA	Crude Oil Inventories	+0.5 MBRL	+0.2 MBRL	

Q4 Earning Schedule

Date	Symbols
May 15, 2013	Adani Ports; Adhunik Metal; Ador Welding; Amar Remedies; Arvind Remedies; Atlas Cycle; Bajaj Finserv; BAJFINANCE; Ballarpur Inds; BF Utilities; Bharatiya Global; C&C Const; Care; Centrum Cap; CenturyEnka; Century Tex; DS Kulkarni; Edelweiss Financial; Fact Enterprise; GVK Power; Hitachi Home; HOV Serv; ICSA India; IRB Infra; J&K Bank; Karnataka Bank; Lok Housing; Manappuram Finance; Maxwell Inds; Nectar Life; Onmobile ;Orchid Chem; Oudh Sugar ; Sona Koyo; Sterling Bio;United Spirits; VGuard Inds; VIP Inds; Welspun India.
May 16, 2013	Aarti Drugs; Aarti Inds; Archies; Arvind; Bajaj Auto; Bajaj Holdings; Essar Shipping; GNFC; GACL; GSFC; Hikal; Hinduja Vent; INFINITE; JMC Projects; Kalpataru Power; Mangalore Chem; Mcdowell Hold; Orbit Corp; Oriental Hotels; Reliance Cap; Satyam Comp; TTK Prestige; UCAL Fuel; V-Mart Retail



DISCLAIMER: This document is not for public distribution and has been furnished to you solely for your information and must not be reproduced or redistributed to any other person. Persons into whose possession this document may come are required to observe these restrictions.

The information and views in this report, our website & all the service we provide are believed to be reliable, but we do not accept any responsibility (or liability) for errors of fact or opinion. Users have the right to choose the products that suits them the most. Investment in Stocks has its own risks. Sincere efforts have been made to present the right investment perspective. The information contained herein is based on analysis and up on sources that we consider reliable. We, however, do not vouch for the accuracy or the completeness thereof. This material is for personal information and we are not responsible for any loss Incurred based upon it & take no responsibility whatsoever for any financial profits or loss which may arise from the recommendations above.

Recipients of this material should rely on their own investigations and take their own professional advice. Each recipient of this document should make such investigations as it deems necessary to arrive at an independent evaluation of an investment in the securities of companies referred to in this document including the merits and risks involved), and should consult their own advisors to determine the merits and risks of such an investment. Price and value of the investments referred to in this material may go up or down. Past performance is not a guide for future performance. Certain transactions - futures, options and other derivatives as well as non-investment grade securities - involve substantial risks and are not suitable for all investors. Reports based on technical analysis centers on studying charts of a stock's price movement and trading volume, as opposed to focusing on a company's fundamentals and as such, may not match with a report on a company's fundamentals.
All the Rights are reserved.

Contact Us: research@urjatrade.com

Web: www.LAAVLE.com

Registration: NSE - CASH INB230696132 | NSE - FO INF230696132 | BSE - CASH INB010696137

URJA INVESTMENT PTE. LTD.

Private & Confidential